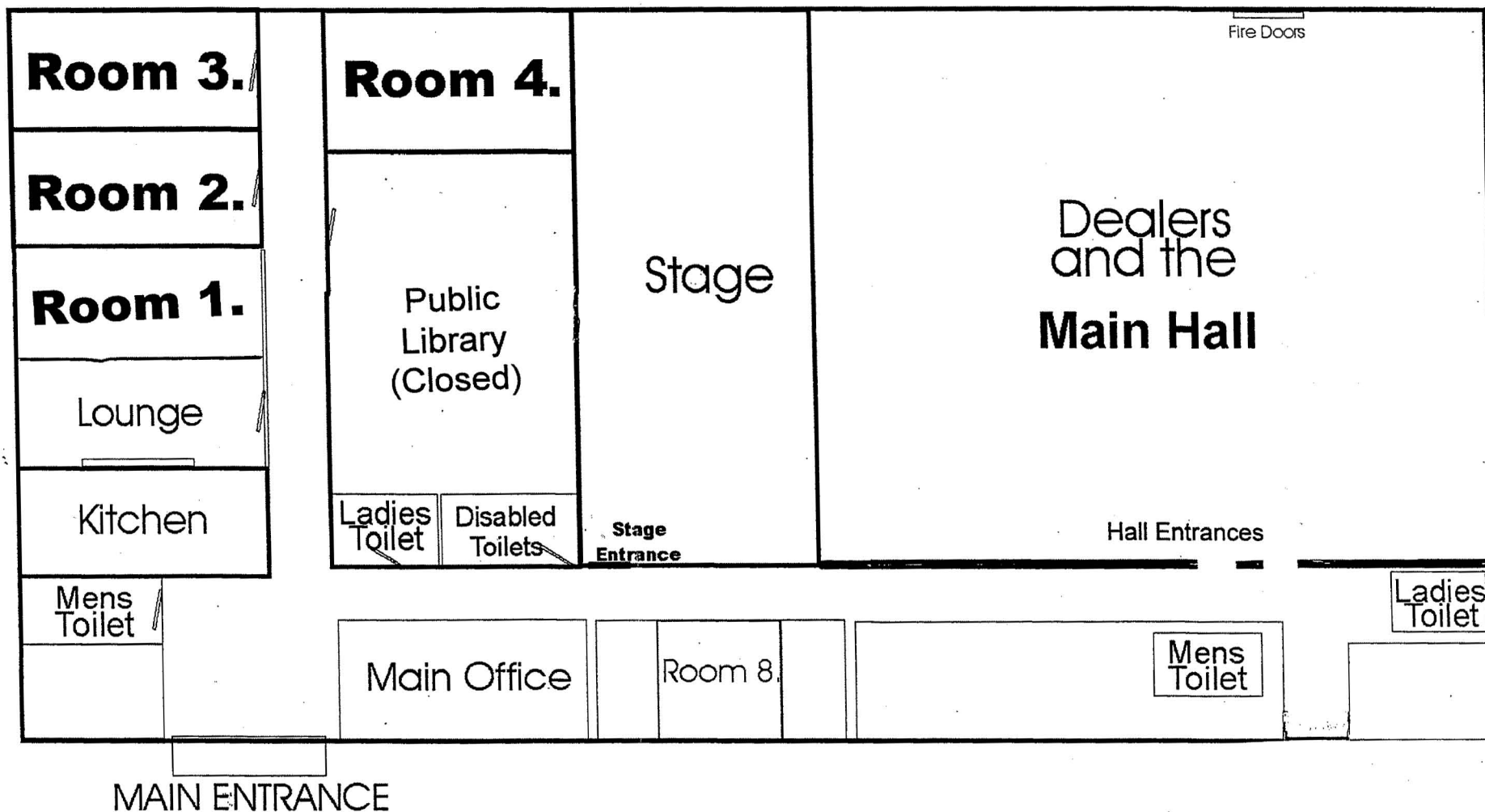


Kinson Community Centre (Pelhams)

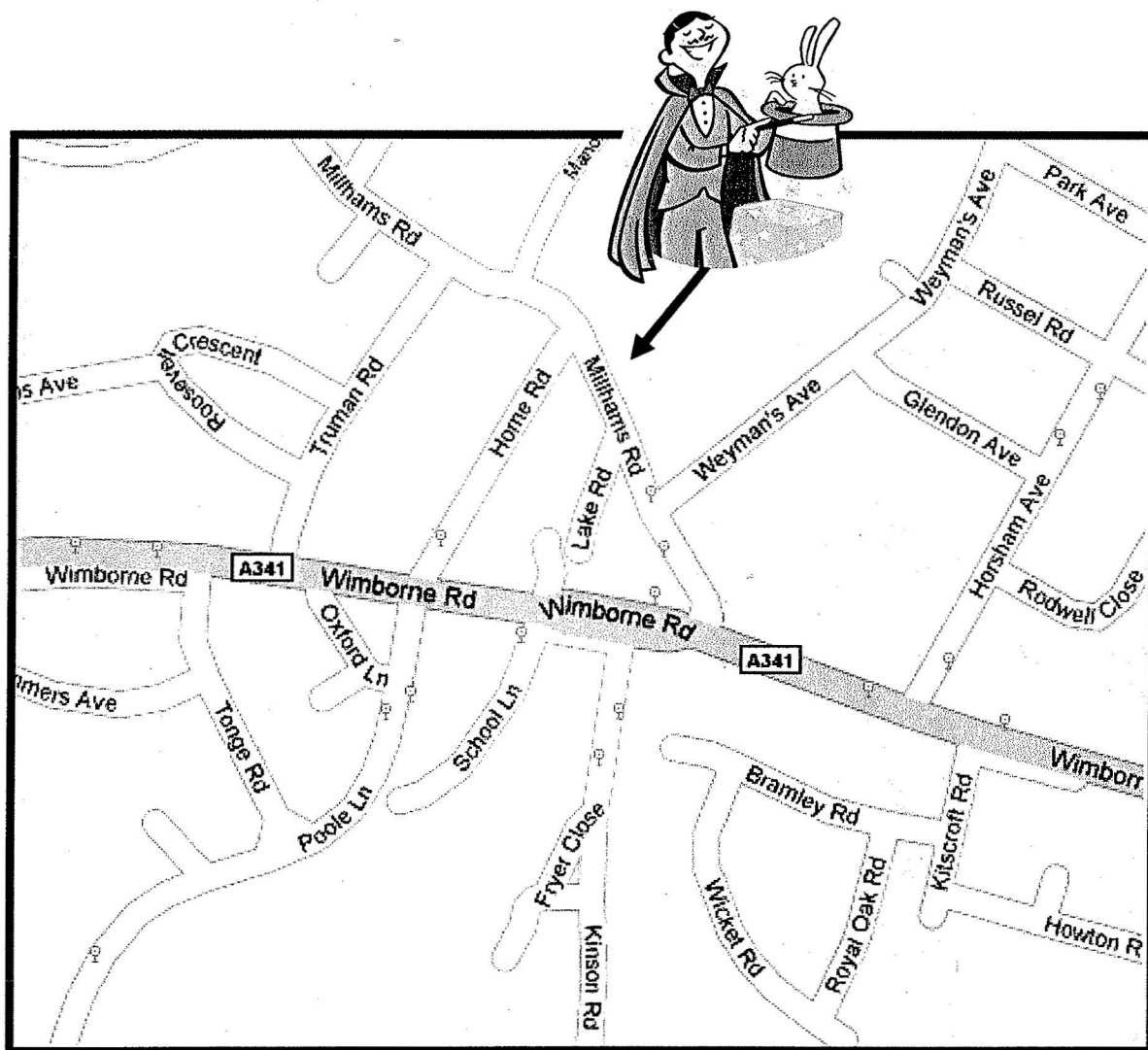
Wessex Convention Sunday 5th April 2009

(Not to scale)



Wessex Magical Association Convention & Gala Show Location

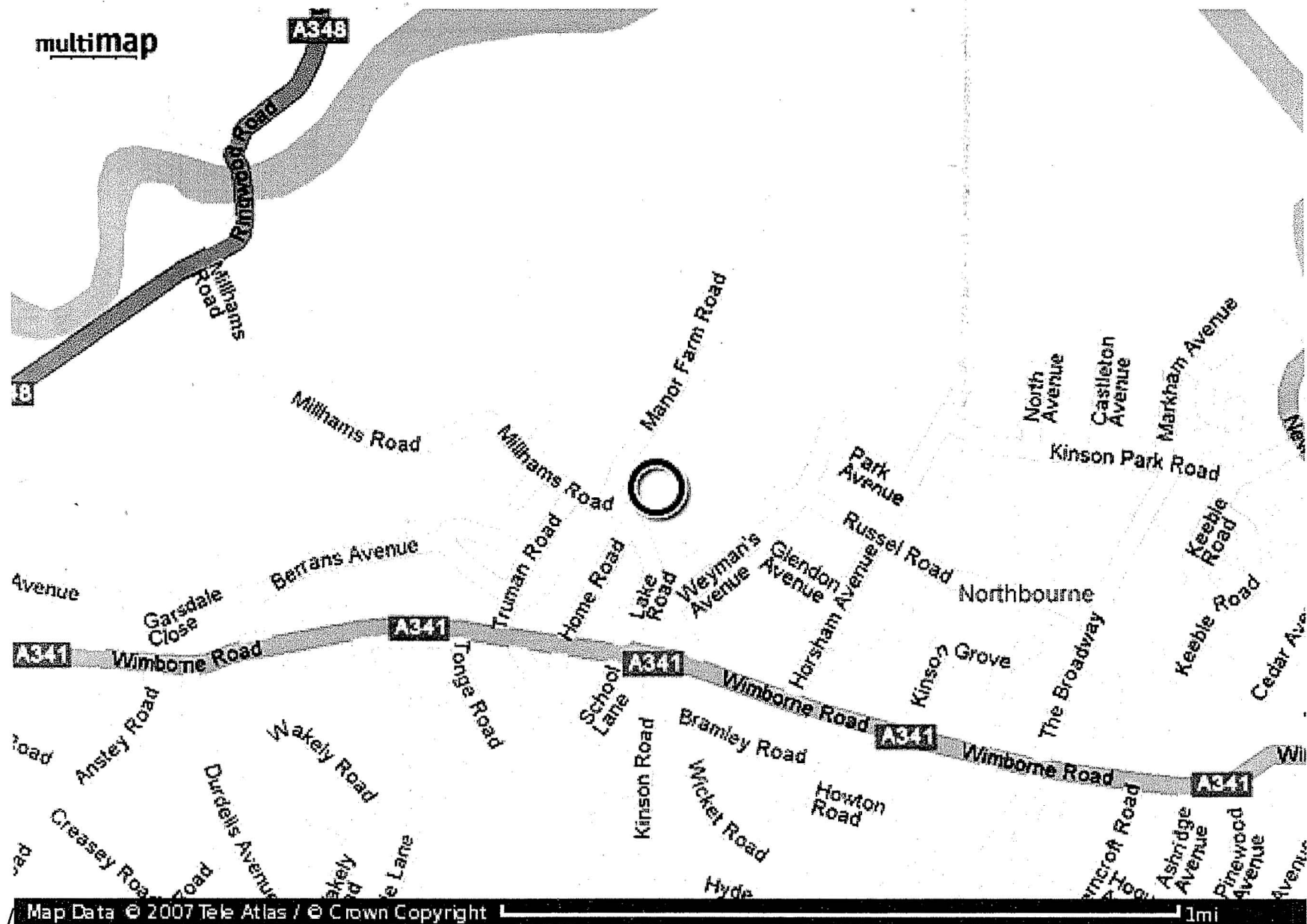
Kinson Community Centre (Pelham's Park)
Millhams Road
Kinson
Bournemouth
BH10 7LH



Parking available in the grounds of Pelhams Park.



Directions to Kinson Community Centre, Pelhams Park, Milhams Road, Kinson, Bournemouth (BH10 8LH)



Directions to Kinson Community Centre, Pelhams Park, Milhams Road, Kinson, Bournemouth (BH10 8LH)

From Ringwood, Hampshire (A 31)

Road Directions

- A31 From Ringwood, Hampshire, to Wimborne
Continue forward onto Ringwood Road - A31
Signposted The West, Dorchester
- At Woolsbridge r'bout take 2nd exit onto A31
Signposted Dorchester
At Boundary Lane r'bout take 2nd exit onto A31
Signposted Dorchester, Wimborne
- At Azalea Roundabout take 1st exit onto A31
Signposted Dorchester

- A347 At roundabout take 1st exit onto A347
Signposted Bournemouth

At roundabout take 1st exit onto A347
At roundabout take 2nd exit onto A347

- A348 At roundabout take 2nd exit onto A348
At roundabout take 1st exit onto A348

- A341 At roundabout take 1st exit onto A341
Turn Left into Home Road
Turn right into Millhams Road; the entrance to the
centre is on your left
Arrive at BH10 7LH, Bournemouth

From Wimborne, Dorset

Road Directions

- B3073 From Wimborne Minster, Dorset
B3078 Turn left onto West Borough - B3078
B3073 Bear right onto Priors Walk - B3073
At r'bout take 1st exit onto Hanham Rd - B3073
At r'bout take 2nd exit onto Hanham Rd- B3073
At r'bout take 2nd exit to Rowlands Hill- B3073
At roundabout take 2nd exit to Rodway-B3073
- A349 At Merley roundabout take 1st exit onto A349
Signposted Poole, A349
- A341 At traffic signals turn left onto A341
Signposted Bournemouth
- At roundabout take 2nd exit onto A341
Turn Left into Home Road
Turn right into Millhams Road; the entrance to the
centre is on your left
Arrive at BH10 7LH, Bournemouth

From Poole, Dorset (A350)

Road Directions

- A350 Start out at Poole, Dorset
At Hungerhill r'bout take the 3rd exit onto A350
Signposted All Routes, Blandford, Wimborne
- At Holes Bay R'bout take 1st exit onto A350
Signed Blandford, B'mouth, Dorch, Ringwood
- A3049 At Holes Bay N R'bout take 2nd exit to A3049
Signposted Bournemouth, Ringwood
- At roundabout take 1st exit onto the A3049
Signposted Bournemouth
- At roundabout take 2nd exit onto the A3049
Signposted Ringwood, Bournemouth
- At Alderney Roundabout take 1st exit to A3049
Signposted Ringwood
- A348 At roundabout take 2nd exit onto A348
At roundabout take the 3rd exit onto A348
- A341 At roundabout take the 3rd exit onto A341
Turn Left into Home Road
Turn right into Millhams Road; the entrance to the
centre is on your left
Arrive at BH10 7LH, Bournemouth

WMA One-Day Convention 2009

MAGIC DEALERS

Carol Gilbert is selling items from the late Ron Gilbert's collection of unique magic and secondhand effects

Mike Danata's Magic Studio
www.mikedanatasmagicstudio.co.uk

Magic Zone—Gary Young
www.magiczoneenterprises.co.uk

Alakazam
www.alakazam.co.uk

Playtime Balloons
www.playtimeballoons.fsworld.co.uk

Stephen Tucker Magic
www.stephentuckermagic.co.uk

The Card Collection
www.cards4magic.co.uk

Paul Gordon
www.paulgordon.net

Razamatazz
www.razamatazzmagic.com

Tony Griffith
www.tonygriffith.co.uk

Zane's Magic Shop
www.zanesmagicshop.com

Mark Worgan
www.markworgan.co.uk

Wayne Dobson
www.waynedobson.co.uk



THE WESSEX
MAGICAL
ASSOCIATION

One-Day Convention

Kinson Community Centre,
Pelhams Park, Milhams Road,
Kinson, Bournemouth BH10 7LH

Sunday 5th April 2009
9.30 am—8.30 pm

Welcome

Welcome to the WMA's biennial One-Day Convention and Gala Show. We have a great line-up for you to enjoy: magic dealers, top-class lectures, workshops, close-up performers and stage acts. If you are new to the WMA, please introduce yourself to members who'll be glad to give you a personal welcome. We thank you for your support and wish you a truly magical day.

Derek Roberts

Derek Roberts
WMA President

The Wessex Magical Association meets on the second Tuesday of each month, at 8.00 pm, in the Bourne Valley Community Centre, 56 Herbert Avenue, Poole, Dorset BH12 4EE.

Our regular annual programme always includes lectures by UK or international magicians, dealer demonstrations, in-house workshops, competitions and social events —an Annual Dinner & Cabaret and a Christmas Party.

Members may bring guests to 'open' meetings only. Prospective members are invited to apply to join the WMA by contacting secretary@wmagic.co.uk or 01258 454232.

Providing that prospective members show a genuine interest in the art of magic, they may join as associate members for six months, after which an audition (or other appropriate interview) is required for full membership which is marked by formal induction into the association.

See the WMA website: www.wmagic.co.uk for details

Programme

- | | |
|--------|---|
| 9.30 | Doors open |
| 9.30 | Dealers open for business |
| | <i>Please buy from the DEALERS
who are supporting our Convention</i> |
| 10.15 | Opening by President Derek Roberts |
| 10.17 | Dealer Demonstrations on Stage |
| 11.30 | STAR LECTURE—Stephen Tucker |
| 1.00 | Comedy Magic lecture—Roger Drew
'An Act from TESCO' (Room 3) |
| | <i>ARBUCKLES is serving food
and drinks throughout the day</i> |
| 2.00 | Balloon Workshop—Playtime Balloons
'Inflation with a Twist' (Room 2) |
| | OR |
| 2.00 | Mental Magic seminar—Tony Griffith
'Griff goes Mental' (Room 4) |
| 3.00 | STAR LECTURE—Jasper Blakeley |
| 5.00 | Dealers close |
| 5.00 | Close-up Magic (Rooms 1, 2, 3 & 4) |
| | <i>Find a seat in one of the rooms and
the close-up performers will come to you</i> |
| 6.00 | Doors open for Gala Show |
| 6.30 | GALA SHOW |
| c 8.30 | Finish |



WMA One-Day Convention
6.30 pm 5th April 2009

GALA SHOW

President Derek Roberts

Your compère—Kockov

The Starburst Dancers

Taro the Jester

Art of the Impossible

Michael Pearse

The Starburst Dancers

Kockov

Tensai

There will be no interval. Show ends c. 8.30pm.